

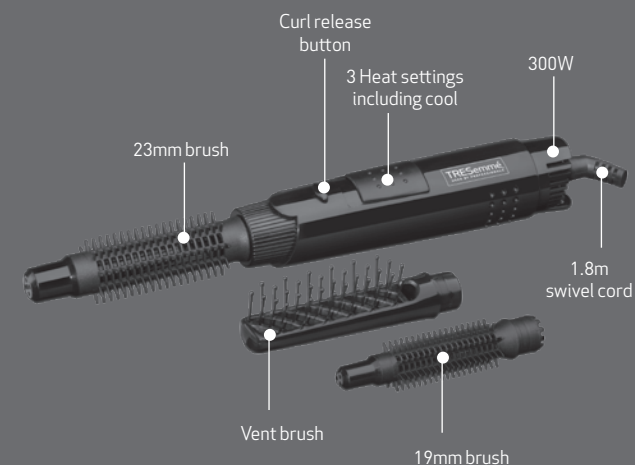
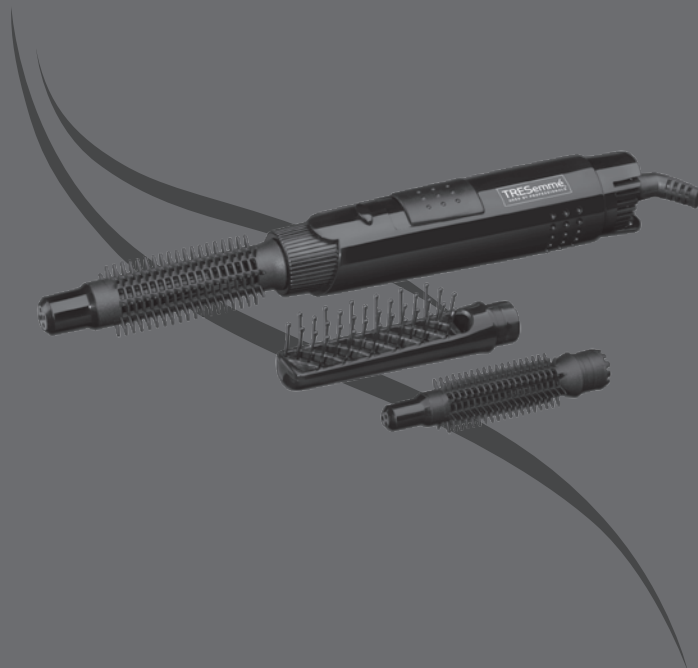
TRESemmé
USED BY PROFESSIONALS

Thank you for buying the TRESemmé Full Finish Air Styler

We hope you enjoy using it. From our origins in salons in 1948, TRESemmé has been driven by a simple truth: every woman deserves to look & feel fabulous, like they've just stepped out of the salon.

TRESemmé is dedicated to creating haircare products that are salon quality. Inspired by stylists and tested in salons the products are designed to help you achieve salon gorgeous hair every day.

TRESemmé® – Professional. At your fingertips. ©



**FULL FINISH
AIR STYLER**

Model: 5265TU

Safety Cautions

- This appliance should only be used as described within this instruction booklet. Please retain for reference.

IMPORTANT CHILD SAFETY

WARNING! Polythene bags over product or package may be dangerous. To avoid danger of suffocation, keep this wrapper away from babies and children. This bag is not a toy.

WARNING! THIS APPLIANCE GETS HOT!

- **ALWAYS** keep out of reach of children (during and after use and whilst cooling).
- This appliance should not be used, cleaned or maintained by children.
- Always take extra care if used on children or near children.
- Do not use on very young children.

IMPORTANT SAFETY

- **UK Only:** This appliance must not be used in the bathroom. If using the appliance in a bathroom, unplug after use as the proximity of water can be dangerous even if the appliance is switched off. For additional protection the installation of a residual current device (RCD) with a rated residual operating current not exceeding 30mA is advisable in the electrical circuit supplying the bathroom. Ask your

installer for advice.

- **WARNING!** Do not use this appliance near water contained in basins, bathtubs or other vessels.
- Do not use this appliance in the bathroom.
- Do not immerse the appliance into water or other liquids.
- Always inspect the appliance before use for noticeable signs of damage. Do not use if damaged or if the appliance has been dropped. In the event of damage contact the Conair Customer Care Line (refer to 'UK After Sales Service' section for further information).
- Do not use the appliance if the lead is damaged. In the event of damage contact the Conair Customer Care Line (refer to 'UK After Sales Service' section for further information).
- Do not leave the appliance unattended when switched on or plugged in.
- This unit is equipped with a safety thermostat. In the event of overheating the appliance will either stop automatically or run hot and cold intermittently. Should this happen, switch the styler to the '0' position, unplug and allow to cool for 10 minutes. Before use, ensure that the rear filter is clear of hair and other debris. Plug in and switch on. If the appliance continues to overheat, discontinue use immediately, switch off and unplug, and contact Conair Customer Care Line (refer to 'UK After Sales Service' section for further information).
- Do not place the appliance on any heat

sensitive surface whilst in operation.

- Take care to avoid the hot surface of the appliance coming into direct contact with the skin, in particular the eyes, ears, face and neck.
- Always ensure that the rear air filter is kept away from the hair during use to prevent it being dragged into the fan which may cause the appliance to overheat.
- This appliance should not be used by adults whose reduced physical, sensory or mental capabilities, or whose lack of experience and knowledge, might cause a hazard, unless they have been correctly instructed to understand the safe use and hazards involved and are adequately supervised.
- Allow appliance to cool before storing away.
- After use do not coil the lead around the appliance as this may cause damage to the lead. Instead coil the lead loosely by the side of the appliance.
- This appliance complies with the requirements of Directives 2004/108/EC (Electromagnetic Compatibility) and 2006/95/EC (Electrical Safety of Domestic Appliances).

How to use your new TRESemmé Full Finish Air Styler

- Towel dry and detangle the hair.
- Use TRESemmé Heat Defence Styling Spray to help protect from styling; and if a perfectly smooth finish is desired, use TRESemmé's Silky Smooth product range.
- For best results, use a hairdryer to rough dry hair until it is 80% dry. The hot air styler should be used once hair is nearly dried to add volume and finish your style.
- Insert the brush head attachment by pushing the brush head firmly into the handle until it clicks into place.
- Choose the setting that best suits your hair type and the style you want to achieve.
- Use the cool setting to set your style.
- After use, switch off and unplug the hot air styler.
- Allow to cool before storing away.
- To remove the brush attachment, make sure the hot air styler is completely cool, switched off and unplugged. Simply grip the top of the brush head attachment and pull away from the handle.

Hints and Tips from the Stylists at TRESemmé

- For added root lift and for creating body and volume attach the 19mm or 23mm round brush head attachment. Place it into the hair close to the roots; hold the brush in place at the roots for a few seconds before gently moving the styler slowly down the hair.
- To create shape at the ends of the hair, run the brush head attachment from the root to the ends. As you reach the end of the section rotate the brush head turning the ends of your hair inward to achieve a turned in style or alternatively rotate the brush outwards for a flicked out style.
- The vent brush attachment can be used to finish drying damp hair to give a smooth finish.
- Use the curl release button to easily remove the brush from the hair.
- The cool setting is used at the end of styling to set the style and give long-lasting effect. Once you have finished styling your hair, move the slide switch to the cool position and brush through the section of hair. The cool air helps lock in the style for long-lasting effect.

Care and Maintenance

To help keep your appliance in the best possible condition follow the steps below:

General

- Do not wrap the lead around the appliance, instead coil the lead loosely by the side of the appliance.
- Do not use the styler at a stretch from the power point.
- Always unplug after use.

Cleaning

- It is important to make sure you regularly remove hair tangled in the brush head attachment.
- Clean the rear filter regularly to help prevent overheating in use. Ensure the appliance is switched off, cool and unplugged. Using a soft brush, clean any hair and debris from the filter.

UK Guarantee

This TRESemmé appliance is guaranteed for consumer use for 3 years. This guarantee covers defects under normal use from date of purchase and ceases to be valid in the event of alteration or repairs by unauthorised persons. If the appliance does not perform satisfactorily due to defects in materials or manufacture, it will be repaired or replaced through Conair UK After Sales Service. The Conair Group Ltd reserves the right to amend terms and specifications without prior notice.

This guarantee in no way affects your statutory rights.

UK After Sales Service

For further advice on using the appliance or should you need to return your product, contact the Conair Customer Care Line on 0345 2 668869 (09:00 to 17:00 Monday to Friday) or email your enquiry to ukinfo@conair.com.


The return address is:

Customer Care Centre
Conair Logistics
Unit 4, Revolution Park
Buckshaw Avenue
Buckshaw Village
Chorley
PR7 7DW

Please enclose your returns number, name and address, together with a copy of proof of purchase and details of fault.

TRESemmé is a registered trade mark of Unilever and is used under license. All rights reserved.

Safe Disposal

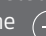
The  symbol on the product or on its packaging indicates that this product may not be treated as household waste. Instead it should be handed to an appropriate collection point for the recycling of Electrical and Electronic equipment. By ensuring this product is disposed of correctly, you will help prevent potential negative consequences for the environment and human health, which could otherwise be caused by inappropriate waste handling of this product. For more detailed information about the recycling of this product, please contact your local council office or your household waste disposal service.

UK Wiring Instructions

The wires in the mains lead are coloured in accordance with the following code:

BLUE = NEUTRAL
BROWN = LIVE

As the colours of the wire in the mains lead of this appliance may not correspond with the colour marking identifying the terminals on your plug, proceed as follows:

- The wire which is coloured BLUE must be connected to the terminal which is marked with the letter N.
- The wire which is coloured BROWN must be connected to the terminal which is marked with the letter L.
- Neither the BLUE nor BROWN wires should be connected to the terminal which is marked with the letter E or the  symbol.

This appliance is supplied fitted with a BS1363 mains plug and a BS1362 3A fuse. If this plug is removed from the appliance please ensure it is disposed of safely as a disconnected plug is dangerous if reconnected to the mains. If any other type of plug is used, a 3A fuse must be fitted.